

## **Royal Oak Dr between Lochside Dr and Emily Carr Dr**

**October 21, 2019 To October 26, 2019**



The data presented here is for information purposes only and should not be considered authoritative for construction, geotechnical, engineering, navigational, legal, or other site-specific uses. The information shared is owned by the Transportation Division of the Engineering Department at the District of Saanich. Accuracy is not guaranteed.

Start Date: 21-Oct-19  
 Start Time: 0:00  
 Station ID: M0030-05

**Location 1: Royal Oak Dr between Lochside Dr and Emily Carr Dr**

Note:

DATE:	October 21, 2019		October 22, 2019		October 23, 2019		October 24, 2019		October 25, 2019		WK AVG		WK AVG	HOURLY
	MON		TUE		WED		THURS		FRI		EB	WB	CH 1+2	%
Time:	EB	WB	EB	WB	EB	WB	EB	WB	EB	WB	EB	WB		
12-1 AM			23	18	18	16	23	14			21	16	37	0.2%
1-2 AM			11	8	12	5	6	9			10	7	17	0.1%
2-3 AM			1	1	4	5	0	1			2	2	4	0.0%
3-4 AM			4	8	4	9	6	15			5	11	15	0.1%
4-5 AM			11	30	13	17	12	13			12	20	32	0.2%
5-6 AM			33	96	30	90	32	87			32	91	123	0.7%
6-7 AM			93	172	94	165	102	174			96	170	267	1.6%
7-8 AM			417	449	405	440	387	448			403	446	849	5.2%
8-9 AM			664	745	661	748	731	749			685	747	1433	8.7%
9-10 AM			511	557	517	559	535	528			521	548	1069	6.5%
10-11 AM			508	519	468	480	504	495			493	498	991	6.0%
11-12 PM			535	546	553	538	560	523			549	536	1085	6.6%
12-1 PM			584	544	573	542	583	550			580	545	1125	6.8%
1-2 PM			532	549	575	551	527	550			545	550	1095	6.7%
2-3 PM			648	600	684	617	617	673			650	630	1280	7.8%
3-4 PM			729	758	713	748	694	725			712	744	1456	8.9%
4-5 PM			809	685	750	674	834	676			798	678	1476	9.0%
5-6 PM			711	621	688	578	779	607			726	602	1328	8.1%
6-7 PM			478	400	439	410	485	467			467	426	893	5.4%
7-8 PM			351	291	340	272	350	344			347	302	649	4.0%
8-9 PM			288	210	287	211	304	240			293	220	513	3.1%
9-10 PM			185	151	234	182	219	199			213	177	390	2.4%
10-11 PM			116	81	112	98	124	93			117	91	208	1.3%
11-12 AM			50	33	64	34	65	54			60	40	100	0.6%
<b>LANES</b>			<b>8292</b>	<b>8072</b>	<b>8238</b>	<b>7989</b>	<b>8479</b>	<b>8234</b>			<b>8336</b>	<b>8098</b>	<b>16435</b>	<b>100.0%</b>
<b>TOTAL</b>			<b>16364</b>		<b>16227</b>		<b>16713</b>				<b>16440</b>			
	MON		TUE		WED		THURS		FRI		WK AVG			

PEAK HOUR					TOTAL VEHICALS-PEAK PERIODS		2 HOUR PEAK INTERVALS						
MAX. 7 - 9 am PEAK HOUR	1433	⇒	8.7%	between 8-9 AM	7296	⇒	6 HR TOTAL	<b>2 HR AM (7 - 9 AM)</b>					
MAX. 7 - 11 am PEAK HOUR	1433	⇒	8.7%	between 8-9 AM	5085	⇒	4 HR TOTAL	VEH / HR	VEH / 2HR	2 HR %			
								7-8 AM	849	2281	13.9%		
								8-9 AM	1433				
MAX. 11 am - 1 pm PEAK HOUR	1125	⇒	6.8%	between 12-1 PM	<b>24 HOUR FACTORS</b> 2.25 ⇒ 6-24 HR FACT. 3.23 ⇒ 4-24 HR FACT.						<b>2 HR NOON (11 - 1 PM)</b>		
MAX. 11 am - 3 pm PEAK HOUR	1280	⇒	7.8%	between 2-3 PM							VEH / HR	VEH / 2HR	2 HR %
											11-12 PM	1085	2210
MAX. 4 - 6 pm PEAK HOUR	1476	⇒	9.0%	between 4-5 PM	<b>2 HR PM (4 - 6 PM)</b> VEH / HR    VEH / 2HR    2 HR %								
MAX. 3 - 6 pm PEAK HOUR	1476	⇒	9.0%	between 4-5 PM							4-5 PM	1476	2804
								5-6 PM	1328				

# Royal Oak Dr between Lochside Dr and Emily Carr Dr

Westbound

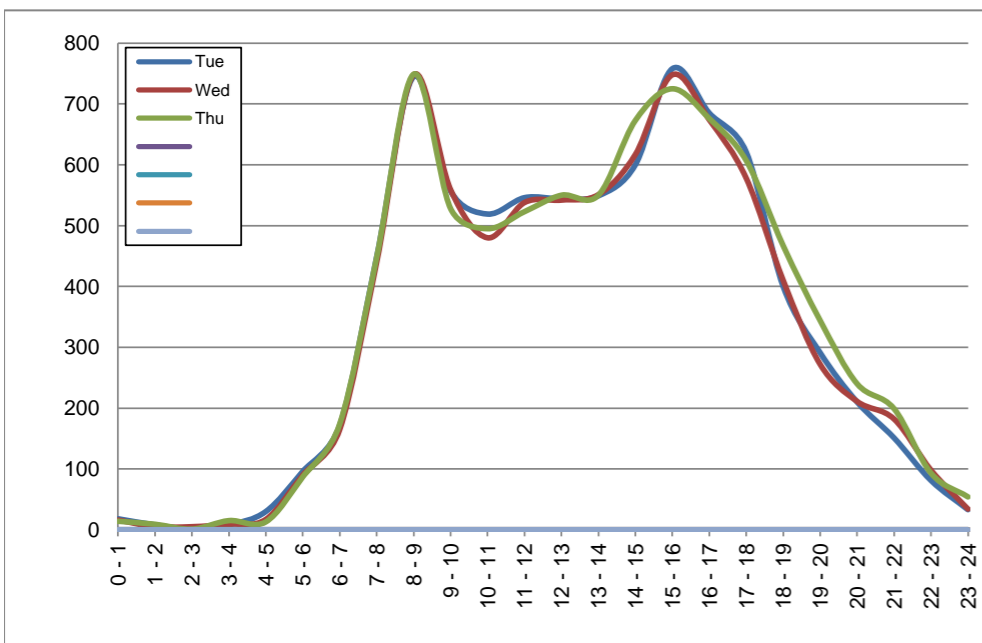
October 22, 2019 to October 24, 2019

## Hourly Volumes

Time Period	Tue	Wed	Thu			
	Oct 22	Oct 23	Oct 24			
0 - 1	18	16	14			
1 - 2	8	5	9			
2 - 3	1	5	1			
3 - 4	8	9	15			
4 - 5	30	17	13			
5 - 6	96	90	87			
6 - 7	172	165	174			
7 - 8	449	440	448			
8 - 9	745	748	749			
9 - 10	557	559	528			
10 - 11	519	480	495			
11 - 12	546	538	523			
12 - 13	544	542	550			
13 - 14	549	551	550			
14 - 15	600	617	673			
15 - 16	758	748	725			
16 - 17	685	674	676			
17 - 18	621	578	607			
18 - 19	400	410	467			
19 - 20	291	272	344			
20 - 21	210	211	240			
21 - 22	151	182	199			
22 - 23	81	98	93			
23 - 24	33	34	54			
<b>Day Total</b>	<b>8072</b>	<b>7989</b>	<b>8234</b>			

## 15-Minute Volumes

Time Start	Tue	Wed	Thu				Time Start	Tue	Wed	Thu			
	Oct 22	Oct 23	Oct 24					Oct 22	Oct 23	Oct 24			
0:00	2	6	2				12:00	133	124	155			
0:15	12	4	6				12:15	138	148	132			
0:30	2	2	6				12:30	137	123	128			
0:45	2	4	0				12:45	136	147	135			
1:00	3	2	4				13:00	118	127	148			
1:15	0	2	0				13:15	150	125	135			
1:30	4	0	3				13:30	153	121	133			
1:45	1	1	2				13:45	128	178	134			
2:00	1	2	1				14:00	123	146	146			
2:15	0	1	0				14:15	151	141	168			
2:30	0	1	0				14:30	145	139	150			
2:45	0	1	0				14:45	181	191	209			
3:00	1	0	3				15:00	212	194	183			
3:15	1	2	4				15:15	154	179	174			
3:30	3	3	3				15:30	188	172	172			
3:45	3	4	5				15:45	204	203	196			
4:00	6	2	0				16:00	164	170	162			
4:15	6	6	4				16:15	179	158	187			
4:30	10	4	2				16:30	179	180	155			
4:45	8	5	7				16:45	163	166	172			
5:00	20	11	18				17:00	171	155	165			
5:15	26	22	21				17:15	152	150	149			
5:30	26	26	31				17:30	139	135	162			
5:45	24	31	17				17:45	159	138	131			
6:00	25	27	23				18:00	98	129	142			
6:15	32	30	37				18:15	111	108	128			
6:30	55	49	49				18:30	95	91	90			
6:45	60	59	65				18:45	96	82	107			
7:00	65	54	69				19:00	79	80	72			
7:15	87	83	96				19:15	75	60	96			
7:30	148	138	122				19:30	72	66	83			
7:45	149	165	161				19:45	65	66	93			
8:00	187	172	185				20:00	58	55	83			
8:15	156	175	181				20:15	58	64	58			
8:30	180	212	199				20:30	47	51	58			
8:45	222	189	184				20:45	47	41	41			
9:00	143	150	137				21:00	47	49	49			
9:15	134	136	125				21:15	43	46	77			
9:30	141	148	122				21:30	27	52	35			
9:45	139	125	144				21:45	34	35	38			
10:00	132	110	130				22:00	31	28	28			
10:15	125	110	104				22:15	15	26	20			
10:30	155	152	138				22:30	14	21	20			
10:45	107	108	123				22:45	21	23	25			
11:00	115	142	115				23:00	12	17	19			
11:15	127	105	140				23:15	8	10	9			
11:30	158	131	133				23:30	10	5	12			
11:45	146	160	135				23:45	3	2	14			



Site notes:

# Royal Oak Dr between Lochside Dr and Emily Carr Dr

Eastbound

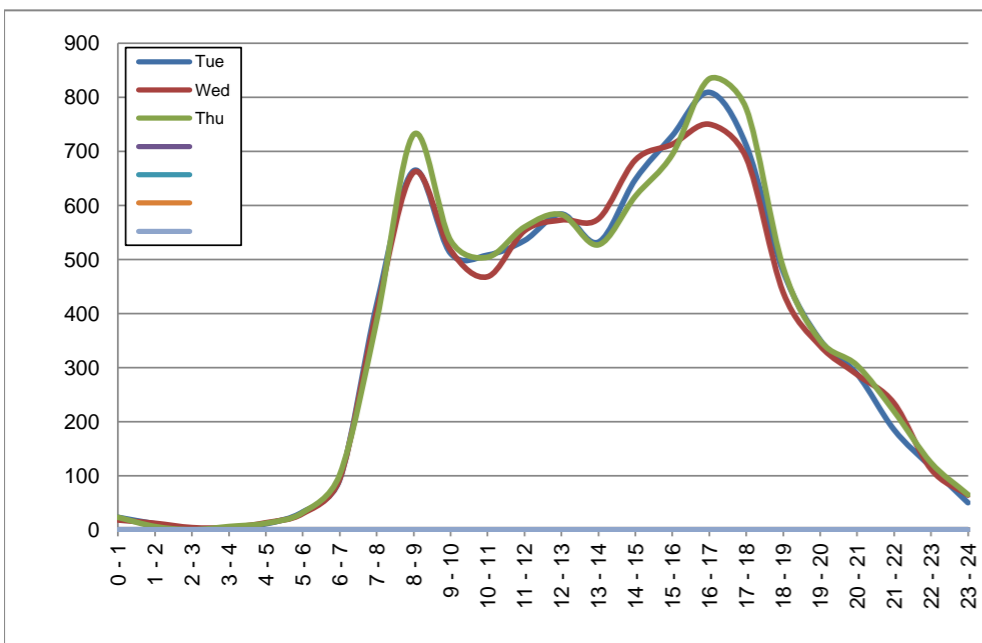
October 22, 2019 to October 24, 2019

## Hourly Volumes

Time Period	Tue	Wed	Thu			
	Oct 22	Oct 23	Oct 24			
0 - 1	23	18	23			
1 - 2	11	12	6			
2 - 3	1	4	0			
3 - 4	4	4	6			
4 - 5	11	13	12			
5 - 6	33	30	32			
6 - 7	93	94	102			
7 - 8	417	405	387			
8 - 9	664	661	731			
9 - 10	511	517	535			
10 - 11	508	468	504			
11 - 12	535	553	560			
12 - 13	584	573	583			
13 - 14	532	575	527			
14 - 15	648	684	617			
15 - 16	729	713	694			
16 - 17	809	750	834			
17 - 18	711	688	779			
18 - 19	478	439	485			
19 - 20	351	340	350			
20 - 21	288	287	304			
21 - 22	185	234	219			
22 - 23	116	112	124			
23 - 24	50	64	65			
<b>Day Total</b>	<b>8292</b>	<b>8238</b>	<b>8479</b>			

## 15-Minute Volumes

Time Start	Tue	Wed	Thu				Time Start	Tue	Wed	Thu			
	Oct 22	Oct 23	Oct 24					Oct 22	Oct 23	Oct 24			
0:00	12	5	8				12:00	161	126	123			
0:15	6	4	5				12:15	164	145	141			
0:30	2	8	5				12:30	125	141	168			
0:45	3	1	5				12:45	134	161	151			
1:00	6	6	3				13:00	136	142	129			
1:15	2	3	2				13:15	124	129	140			
1:30	2	2	0				13:30	135	142	129			
1:45	1	1	1				13:45	137	162	129			
2:00	0	1	0				14:00	146	154	129			
2:15	1	0	0				14:15	158	177	163			
2:30	0	1	0				14:30	178	182	158			
2:45	0	2	0				14:45	166	171	167			
3:00	1	0	3				15:00	187	184	159			
3:15	1	0	1				15:15	182	171	174			
3:30	0	2	2				15:30	175	198	163			
3:45	2	2	0				15:45	185	160	198			
4:00	3	1	2				16:00	197	193	198			
4:15	2	2	3				16:15	204	201	214			
4:30	1	5	3				16:30	193	211	217			
4:45	5	5	4				16:45	215	145	205			
5:00	3	5	2				17:00	200	184	211			
5:15	13	4	13				17:15	180	182	198			
5:30	6	9	7				17:30	178	185	211			
5:45	11	12	10				17:45	153	137	159			
6:00	16	11	11				18:00	138	107	112			
6:15	14	13	17				18:15	100	124	135			
6:30	29	25	32				18:30	125	102	121			
6:45	34	45	42				18:45	115	106	117			
7:00	64	60	68				19:00	122	76	100			
7:15	96	84	81				19:15	100	96	97			
7:30	111	113	108				19:30	69	81	71			
7:45	146	148	130				19:45	60	87	82			
8:00	184	175	189				20:00	79	85	92			
8:15	172	169	207				20:15	85	84	77			
8:30	165	180	183				20:30	61	58	62			
8:45	143	137	152				20:45	63	60	73			
9:00	147	156	146				21:00	54	54	74			
9:15	120	120	114				21:15	48	76	57			
9:30	120	112	123				21:30	41	58	46			
9:45	124	129	152				21:45	42	46	42			
10:00	133	127	115				22:00	45	35	41			
10:15	108	100	119				22:15	21	26	28			
10:30	140	111	136				22:30	28	25	25			
10:45	127	130	134				22:45	22	26	30			
11:00	112	125	144				23:00	22	31	23			
11:15	127	142	120				23:15	11	13	17			
11:30	150	138	142				23:30	10	11	10			
11:45	146	148	154				23:45	7	9	15			



Site notes:

# Vehicle Speed Summary

Saanich Engineering Department

Count Id: [M0030-05](#)

Filename: [Royal Oak Dr between Lochside Dr and Emily Carr Dr-Oct-2019.xlsm](#)

**Location:** Royal Oak Dr between Lochside Dr and Emily Carr Dr

Note:

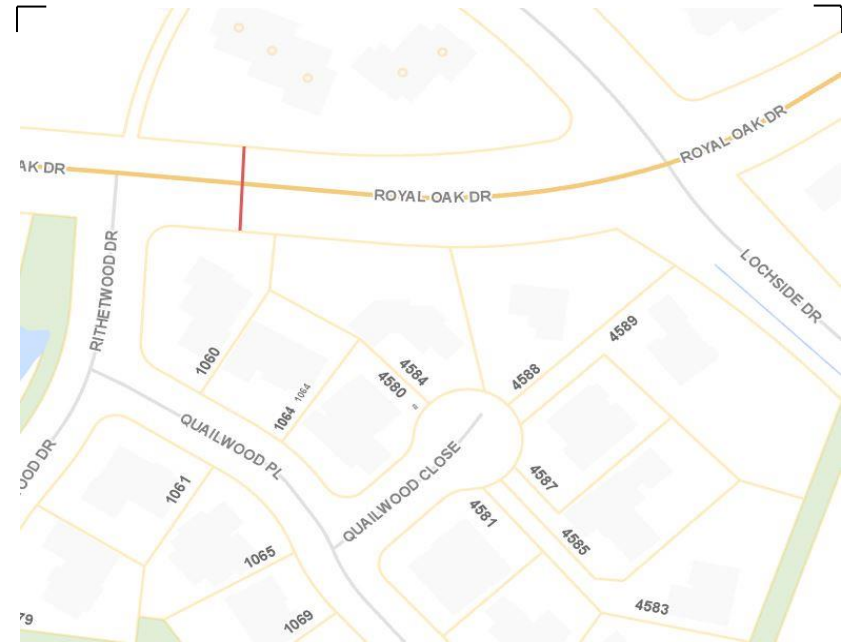
Direction: **East-West**

Dates: **October 21, 2019 To October 26, 2019**

*Filtered data*

AVG. SPEED	<b>25</b> mph	<b>40</b> km/h
50 % SPEED	<b>26</b> mph	<b>41</b> km/h
85 % SPEED	<b>31</b> mph	<b>51</b> km/h
95 % SPEED	<b>35</b> mph	<b>56</b> km/h

Location Map



Royal Oak Dr between Lochside Dr and Emily Carr Dr

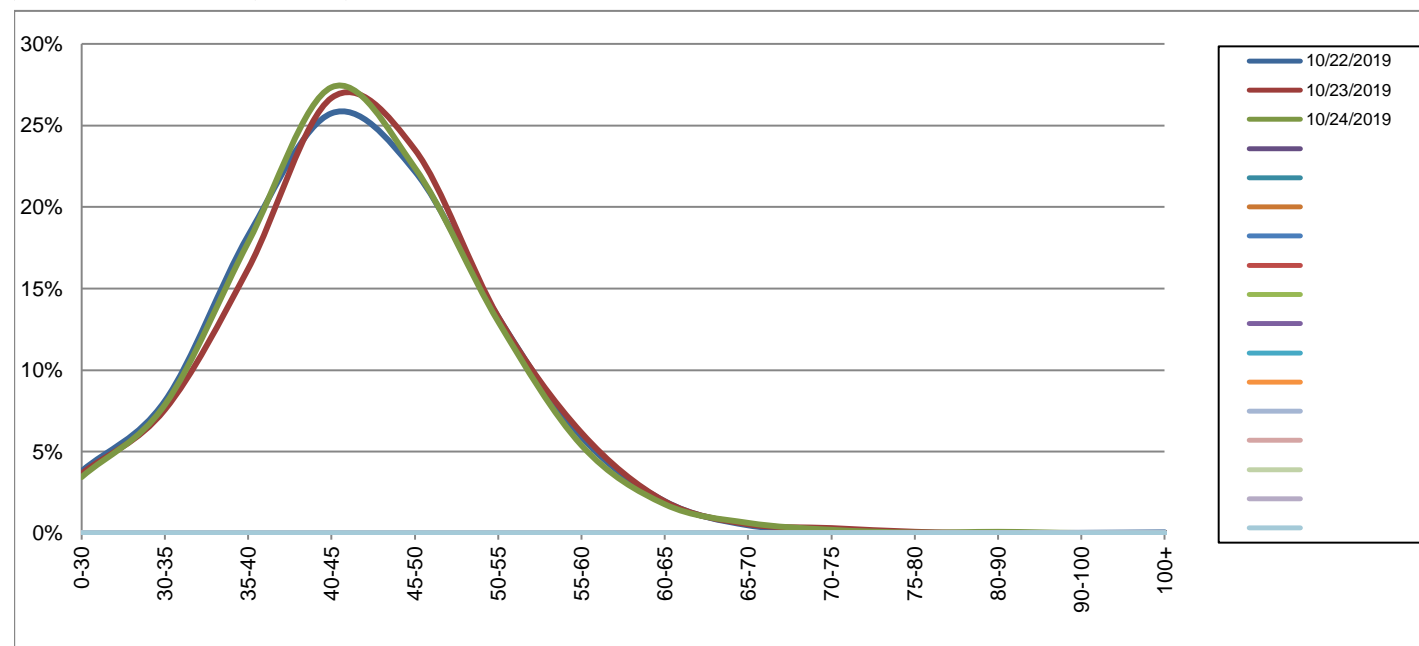
Westbound

October 22, 2019 to October 24, 2019

Daily Speed Bin Percentages															Daily Speed Bin Volumes														Total	Avg.
Bin #	1	2	3	4	5	6	7	8	9	10	11	12	13	14	1	2	3	4	5	6	7	8	9	10	11	12	13	14	Volume	Speed
Bin Speeds	0-30	30-35	35-40	40-45	45-50	50-55	55-60	60-65	65-70	70-75	75-80	80-90	90-100	100+	0-30	30-35	35-40	40-45	45-50	50-55	55-60	60-65	65-70	70-75	75-80	80-90	90-100	100+		
10/22/2019	3.8%	8.1%	18.2%	25.7%	22.2%	13.3%	5.9%	2.0%	0.5%	0.2%	0.0%	0.0%	0.0%	0.0%	307	654	1473	2078	1791	1070	477	158	39	16	3	0	2	4	8072	44
10/23/2019	3.7%	7.6%	16.2%	26.7%	23.5%	13.3%	6.2%	2.0%	0.6%	0.3%	0.1%	0.0%	0.0%	0.0%	292	605	1295	2132	1879	1061	492	156	44	25	7	0	0	1	7989	44
10/24/2019	3.4%	7.9%	17.8%	27.3%	22.4%	13.0%	5.4%	1.8%	0.6%	0.2%	0.0%	0.1%	0.0%	0.0%	283	648	1468	2251	1845	1069	444	146	52	17	3	7	1	0	8234	44
<b>Total</b>	<b>3.6%</b>	<b>7.8%</b>	<b>17.4%</b>	<b>26.6%</b>	<b>22.7%</b>	<b>13.2%</b>	<b>5.8%</b>	<b>1.9%</b>	<b>0.6%</b>	<b>0.2%</b>	<b>0.1%</b>	<b>0.0%</b>	<b>0.0%</b>	<b>0.0%</b>	<b>882</b>	<b>1907</b>	<b>4236</b>	<b>6461</b>	<b>5515</b>	<b>3200</b>	<b>1413</b>	<b>460</b>	<b>135</b>	<b>58</b>	<b>13</b>	<b>7</b>	<b>3</b>	<b>5</b>	<b>24295</b>	<b>44</b>

Speed Data Summary

Bin #	1	2	3	4	5	6	7	8	9	10	11	12	13	14	Total
Bin Speeds	0-30	30-35	35-40	40-45	45-50	50-55	55-60	60-65	65-70	70-75	75-80	80-90	90-100	100+	
Survey Total	882	1907	4236	6461	5515	3200	1413	460	135	58	13	7	3	5	24295
% Total	3.6%	7.8%	17.4%	26.6%	22.7%	13.2%	5.8%	1.9%	0.6%	0.2%	0.1%	0.0%	0.0%	0.0%	100%
Accumulated %	3.6%	11.5%	28.9%	55.5%	78.2%	91.4%	97.2%	99.1%	99.6%	99.9%	99.9%	100.0%	100.0%	100%	
Inverse Accum. %	96.4%	88.5%	71.1%	44.5%	21.8%	8.6%	2.8%	0.9%	0.4%	0.1%	0.1%	0.0%	0.0%	0.0%	
Average Speed	44 KM/H														



Site notes:

Royal Oak Dr between Lochside Dr and Emily Carr Dr

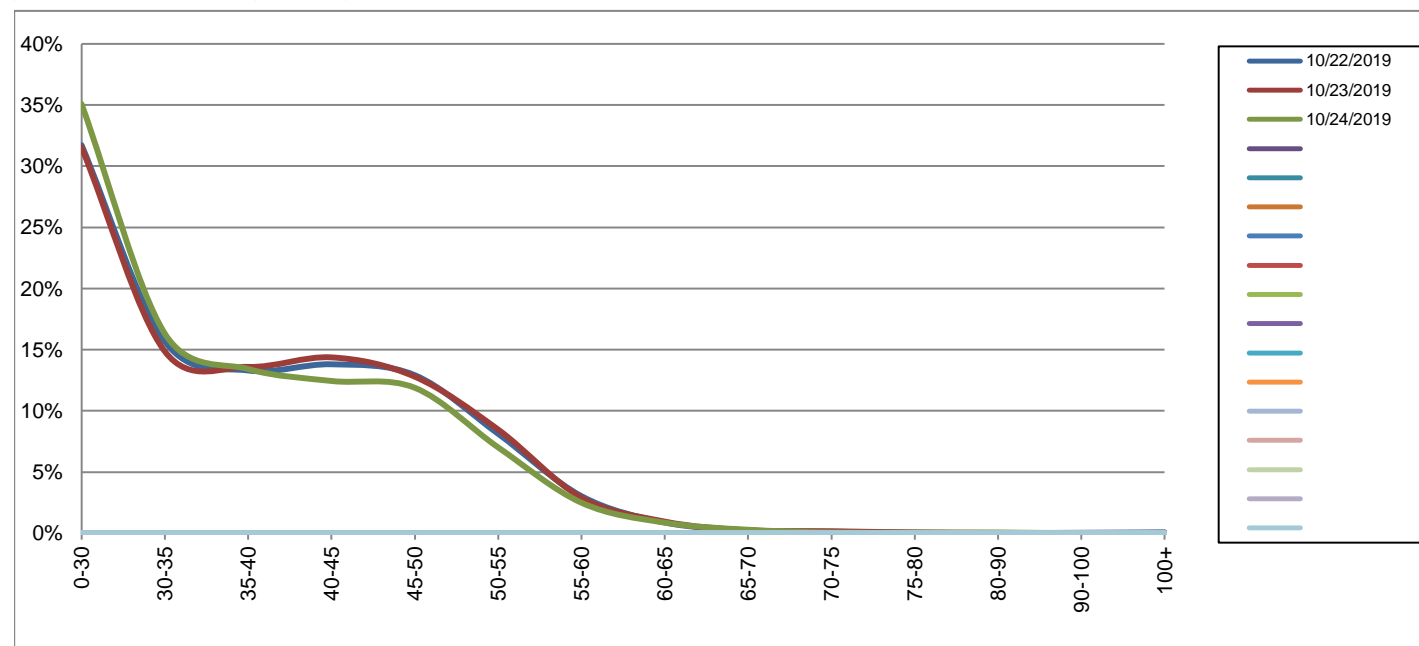
Eastbound

October 22, 2019 to October 24, 2019

Daily Speed Bin Percentages															Daily Speed Bin Volumes														Total	Avg.
Bin #	1	2	3	4	5	6	7	8	9	10	11	12	13	14	1	2	3	4	5	6	7	8	9	10	11	12	13	14	Volume	Speed
Bin Speeds	0-30	30-35	35-40	40-45	45-50	50-55	55-60	60-65	65-70	70-75	75-80	80-90	90-100	100+	0-30	30-35	35-40	40-45	45-50	50-55	55-60	60-65	65-70	70-75	75-80	80-90	90-100	100+		
10/22/2019	31.7%	15.7%	13.3%	13.8%	12.9%	8.1%	3.0%	0.9%	0.2%	0.1%	0.0%	0.0%	0.0%	0.1%	2631	1300	1103	1145	1071	674	251	73	20	10	4	1	3	6	8292	34
10/23/2019	31.5%	14.9%	13.6%	14.4%	12.8%	8.5%	2.9%	0.9%	0.2%	0.2%	0.1%	0.0%	0.0%	0.0%	2599	1224	1120	1184	1054	698	240	78	19	13	5	2	1	1	8238	34
10/24/2019	35.1%	16.3%	13.4%	12.4%	11.9%	7.0%	2.5%	0.9%	0.3%	0.1%	0.0%	0.1%	0.0%	0.0%	2975	1383	1138	1055	1008	595	211	73	24	5	4	5	0	3	8479	33
<b>Total</b>	<b>32.8%</b>	<b>15.6%</b>	<b>13.4%</b>	<b>13.5%</b>	<b>12.5%</b>	<b>7.9%</b>	<b>2.8%</b>	<b>0.9%</b>	<b>0.3%</b>	<b>0.1%</b>	<b>0.1%</b>	<b>0.0%</b>	<b>0.0%</b>	<b>0.0%</b>	<b>8205</b>	<b>3907</b>	<b>3361</b>	<b>3384</b>	<b>3133</b>	<b>1967</b>	<b>702</b>	<b>224</b>	<b>63</b>	<b>28</b>	<b>13</b>	<b>8</b>	<b>4</b>	<b>10</b>	<b>25009</b>	<b>33</b>

Speed Data Summary

Bin #	1	2	3	4	5	6	7	8	9	10	11	12	13	14	Total
Bin Speeds	0-30	30-35	35-40	40-45	45-50	50-55	55-60	60-65	65-70	70-75	75-80	80-90	90-100	100+	
Survey Total	8205	3907	3361	3384	3133	1967	702	224	63	28	13	8	4	10	25009
% Total	32.8%	15.6%	13.4%	13.5%	12.5%	7.9%	2.8%	0.9%	0.3%	0.1%	0.1%	0.0%	0.0%	0.0%	100%
Accumulated %	32.8%	48.4%	61.9%	75.4%	87.9%	95.8%	98.6%	99.5%	99.7%	99.9%	99.9%	99.9%	100.0%	100%	
Inverse Accum. %	67.2%	51.6%	38.1%	24.6%	12.1%	4.2%	1.4%	0.5%	0.3%	0.1%	0.1%	0.1%	0.0%	0.0%	
Average Speed	33 KM/H														



Site notes:

Royal Oak Dr between Lochside Dr and Emily Carr Dr

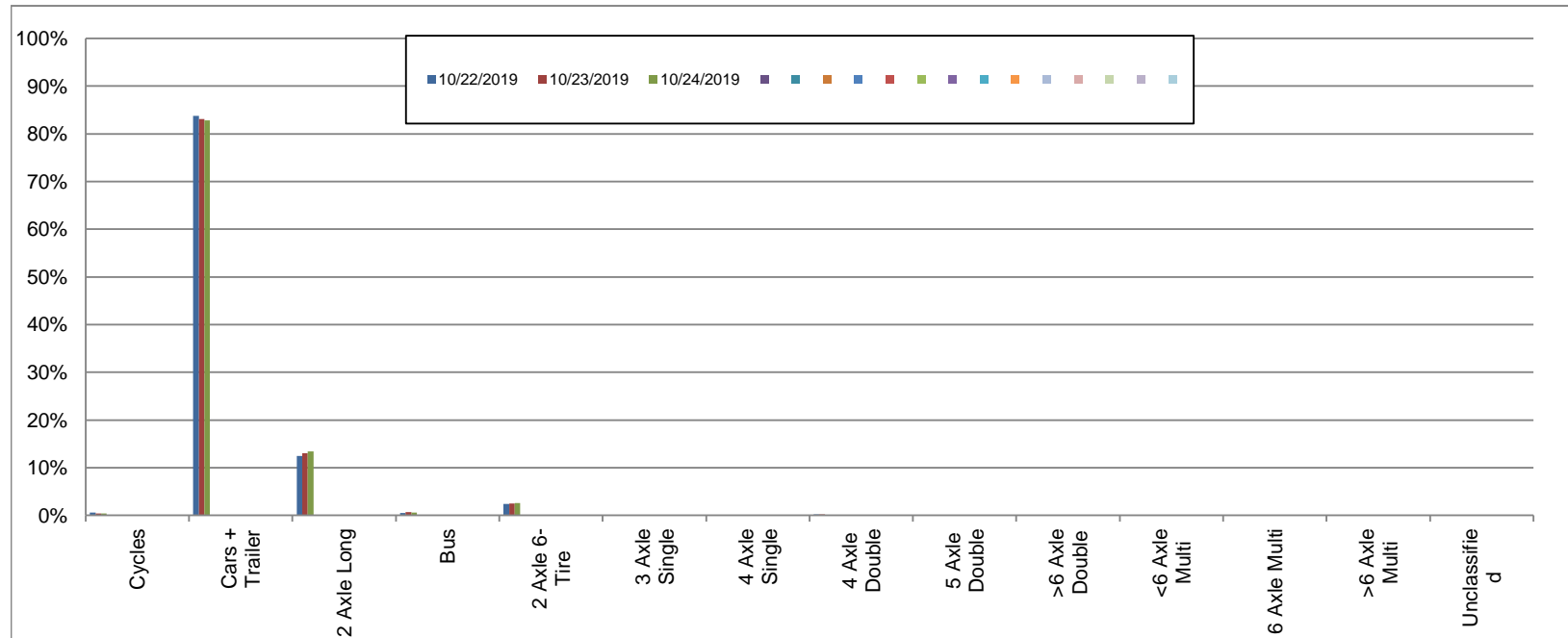
Westbound

October 22, 2019 to October 24, 2019

Daily Class Bin Percentages															Daily Class Bin Volumes											Total Volume			
Bin #	1	2	3	4	5	6	7	8	9	10	11	12	13	14	1	2	3	4	5	6	7	8	9	10	11		12	13	14
Bin Class	Cycles	Cars + Trailer	2 Axle Long	Bus	2 Axle 6-Tire	3 Axle Single	4 Axle Single	4 Axle Double	5 Axle Double	>6 Axle Double	<6 Axle Multi	6 Axle Multi	>6 Axle Multi	Unclassified	Cycles	Cars + Trailer	2 Axle Long	Bus	2 Axle 6-Tire	3 Axle Single	4 Axle Single	4 Axle Double	5 Axle Double	>6 Axle Double	<6 Axle Multi	6 Axle Multi	>6 Axle Multi	Unclassified	
10/22/2019	0.6%	83.7%	12.4%	0.5%	2.4%	0.0%	0.0%	0.2%	0.0%	0.0%	0.0%	0.0%	0.0%	0.1%	48	6759	1003	41	194	3	3	13	1	0	0	0	0	7	8072
10/23/2019	0.4%	83.1%	13.0%	0.7%	2.5%	0.1%	0.0%	0.2%	0.0%	0.0%	0.0%	0.0%	0.0%	0.1%	32	6637	1037	54	201	4	0	13	0	0	0	0	0	11	7989
10/24/2019	0.4%	82.9%	13.4%	0.5%	2.5%	0.1%	0.0%	0.1%	0.0%	0.0%	0.0%	0.0%	0.0%	0.0%	31	6822	1101	45	209	7	3	12	1	0	0	0	0	3	8234
<b>Total</b>	<b>0.5%</b>	<b>83.2%</b>	<b>12.9%</b>	<b>0.6%</b>	<b>2.5%</b>	<b>0.1%</b>	<b>0.0%</b>	<b>0.2%</b>	<b>0.0%</b>	<b>0.0%</b>	<b>0.0%</b>	<b>0.0%</b>	<b>0.0%</b>	<b>0.1%</b>	<b>111</b>	<b>20218</b>	<b>3141</b>	<b>140</b>	<b>604</b>	<b>14</b>	<b>6</b>	<b>38</b>	<b>2</b>	<b>0</b>	<b>0</b>	<b>0</b>	<b>0</b>	<b>21</b>	<b>24295</b>

Class Data Summary

Bin #	1	2	3	4	5	6	7	8	9	10	11	12	13	14	Total Volume
Bin Class	Cycles	Cars + Trailer	2 Axle Long	Bus	2 Axle 6-Tire	3 Axle Single	4 Axle Single	4 Axle Double	5 Axle Double	>6 Axle Double	<6 Axle Multi	6 Axle Multi	>6 Axle Multi	Unclassified	Total Volume
<b>Survey Total</b>	111	20218	3141	140	604	14	6	38	2	0	0	0	0	21	24295
<b>% Total</b>	0.5%	83.2%	12.9%	0.6%	2.5%	0.1%	0.0%	0.2%	0.0%	0.0%	0.0%	0.0%	0.0%	0.1%	100%
<b>Accumulated %</b>	0.5%	83.7%	96.6%	97.2%	99.7%	99.7%	99.7%	99.9%	99.9%	99.9%	99.9%	99.9%	99.9%	100.0%	
<b>Inv. Accum. %</b>	99.5%	16.3%	3.4%	2.8%	0.3%	0.3%	0.3%	0.1%	0.1%	0.1%	0.1%	0.1%	0.1%	0.0%	



Classification Descriptions

Bin #	Bin Description
1	Motorcycles
2	Passenger cars, including those with recreational trailers
3	2-axle pick-ups, vans, and RVs, including those with recreational trailers
4	Buses
5	2-axle, 6-tire single units
6	3-axle single units
7	4-axle single units
8	3-axle or 4-axle double unit
9	5-axle double unit
10	6-, 7-, or 8-axle double unit
11	5-axle multiple unit
12	6-axle multiple unit
13	7-or-more-axle multiple unit
14	Vehicles that could not be classified

Site notes:



Royal Oak Dr between Lochside Dr and Emily Carr Dr

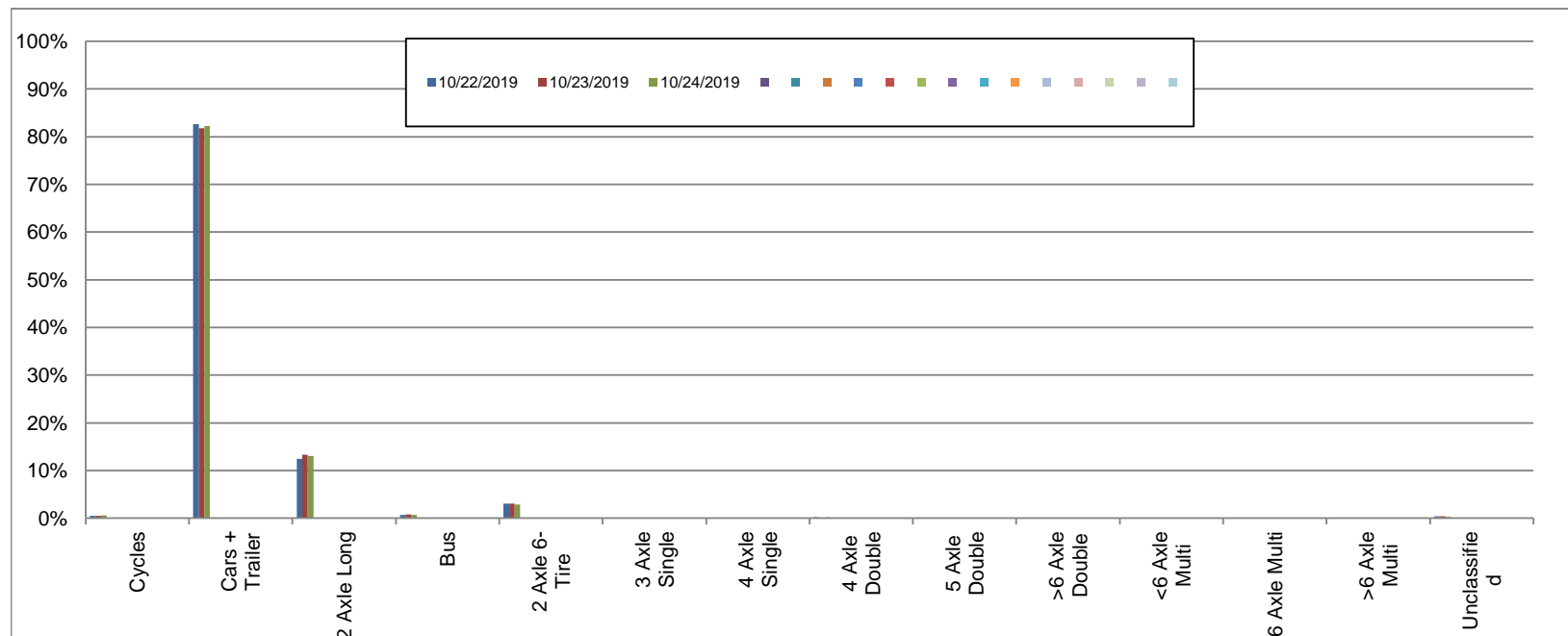
Eastbound

October 22, 2019 to October 24, 2019

Daily Class Bin Percentages															Daily Class Bin Volumes														
Bin #	1	2	3	4	5	6	7	8	9	10	11	12	13	14	1	2	3	4	5	6	7	8	9	10	11	12	13	14	Total Volume
Bin Class	Cycles	Cars + Trailer	2 Axle Long	Bus	2 Axle 6-Tire	3 Axle Single	4 Axle Single	4 Axle Double	5 Axle Double	>6 Axle Double	<6 Axle Multi	6 Axle Multi	>6 Axle Multi	Unclassified	Cycles	Cars + Trailer	2 Axle Long	Bus	2 Axle 6-Tire	3 Axle Single	4 Axle Single	4 Axle Double	5 Axle Double	>6 Axle Double	<6 Axle Multi	6 Axle Multi	>6 Axle Multi	Unclassified	
10/22/2019	0.5%	82.7%	12.5%	0.7%	3.1%	0.0%	0.0%	0.2%	0.0%	0.0%	0.0%	0.0%	0.0%	0.4%	40	6854	1034	54	257	4	1	16	0	0	0	1	0	31	8292
10/23/2019	0.4%	81.8%	13.3%	0.8%	3.1%	0.1%	0.0%	0.2%	0.0%	0.0%	0.0%	0.0%	0.0%	0.4%	37	6739	1095	64	255	5	1	13	0	0	0	0	0	29	8238
10/24/2019	0.5%	82.2%	13.0%	0.7%	2.9%	0.1%	0.0%	0.2%	0.0%	0.0%	0.0%	0.0%	0.0%	0.3%	46	6971	1105	56	246	5	2	16	2	1	0	0	0	29	8479
<b>Total</b>	0.5%	82.2%	12.9%	0.7%	3.0%	0.1%	0.0%	0.2%	0.0%	0.0%	0.0%	0.0%	0.0%	0.4%	123	20564	3234	174	758	14	4	45	2	1	0	1	0	89	25009

Class Data Summary

Bin #	1	2	3	4	5	6	7	8	9	10	11	12	13	14	Total Volume
Bin Class	Cycles	Cars + Trailer	2 Axle Long	Bus	2 Axle 6-Tire	3 Axle Single	4 Axle Single	4 Axle Double	5 Axle Double	>6 Axle Double	<6 Axle Multi	6 Axle Multi	>6 Axle Multi	Unclassified	Total Volume
<b>Survey Total</b>	123	20564	3234	174	758	14	4	45	2	1	0	1	0	89	25009
<b>% Total</b>	0.5%	82.2%	12.9%	0.7%	3.0%	0.1%	0.0%	0.2%	0.0%	0.0%	0.0%	0.0%	0.0%	0.4%	100%
<b>Accumulated %</b>	0.5%	82.7%	95.6%	96.3%	99.4%	99.4%	99.4%	99.6%	99.6%	99.6%	99.6%	99.6%	99.6%	100.0%	
<b>Inv. Accum. %</b>	99.5%	17.3%	4.4%	3.7%	0.6%	0.6%	0.6%	0.4%	0.4%	0.4%	0.4%	0.4%	0.4%	0.0%	



Classification Descriptions

Bin #	Bin Description
1	Motorcycles
2	Passenger cars, including those with recreational trailers
3	2-axle pick-ups, vans, and RVs, including those with recreational trailers
4	Buses
5	2-axle, 6-tire single units
6	3-axle single units
7	4-axle single units
8	3-axle or 4-axle double unit
9	5-axle double unit
10	6-, 7-, or 8-axle double unit
11	5-axle multiple unit
12	6-axle multiple unit
13	7-or-more-axle multiple unit
14	Vehicles that could not be classified

Site notes: